

Types of Scrap Materials available at TAR



A1 Alloy Wheels



A1 Alloy Wheels



A1 Alloy Wheels



**C2 Dirty Radiators
(copper/brass/plastic/Fe/
Some electric motor scrap)**



C1 Copper Radiators Clean



C1 Compressed Copper Radiators



B1 Baled Car Bodies



B1 Car Bodies



B3 Car Bodies Delivered

B1 TAR has large quantities of baled car body steel available for export. The bale dimensions are 600mm X 600mm X variable length. The bales are intended for sale as 'Insize Steel Scrap'.





HMS 1 & 2 Iron and Steel



S1 Baled Steel Rims (high grade steel)

S1 Steel Rims (high grade steel)



A9 Heavy Irony 25% alloy Engines & Gearboxes

A9 Heavy Irony 25% alloy Engines & Gearboxes

A9 Heavy Irony 25% alloy

A9 Heavy Irony Alloy (Engines & Gearbox assemblies containing; Iron, Steel, Copper, approx 25% Aluminium,)



A7 Irony Alloy 35% Transmissions

A7 Irony Alloy 35% Transmissions



A4 Irony Alloy 90%



A4 Irony Alloy 90%



A4 Irony Alloy 90%



A3 Clean Cast Alloy



A3 Clean Cast Alloy



A3 Clean Cast Alloy



A2 Aluminium Extrusion



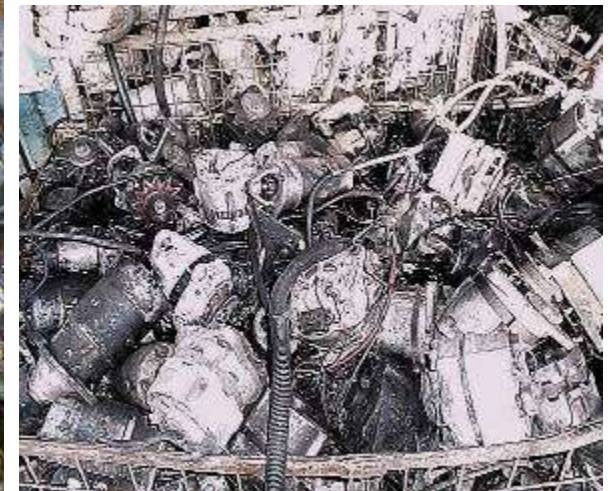
A5 Baled Aluminium. Radiators & Condensers



C3 Electric Motor Scrap



Starter Motors and Alternators





C4 Copper Wiring Looms approx 45% Cu



C4 Copper Wiring Looms approx 45% Cu



**Baled Polyurethane Plastic Bumper Bars
(may contain small amounts of metal screws and clips)**